

ΟΓΔ

C A R I B B E A N
V I L L A S

A PLACE
TO INSPIRE
A LIFETIME





SILVERSANDS

GRAND ANSE

VILLAS

GRENADA OFFERS A MIX OF LUSH HILLSIDES, GOLDEN BEACHES, AND A BLEND OF TRADITION AND MODERN LUXURY. FROM OUR LUXURY SILVERSANDS BEACHFRONT AND SEAVIEW VILLAS, YOU HAVE PRIVATE, PEACEFUL LIVING SURROUNDED BY NATURE, WHILE JUST STEPS AWAY, GRAND ANSE OFFERS A LIVELY MARKET, TURQUOISE WATERS, AND FULL RESORT AMENITIES. OWNING HERE GIVES YOU THE PRIVACY OF YOUR OWN HOME WITH EASY ACCESS TO EVERYTHING GRENADA HAS TO OFFER.



6 A LETTER FROM NAGUIB SAWIRIS

8 ORA CARIBBEAN MAP

10 BEACHFRONT VILLAS

14 BEACHFRONT VILLAS FLOOR PLAN

20 SEAVIEW VILLAS

24 SEASVIEW VILLAS FLOOR PLAN

30 MATERIALS & FINISHES

32 OWNERSHIP BENEFITS

36 CITIZENSHIP BY INVESTMENT

42 LIFESTYLE & COMMUNITY

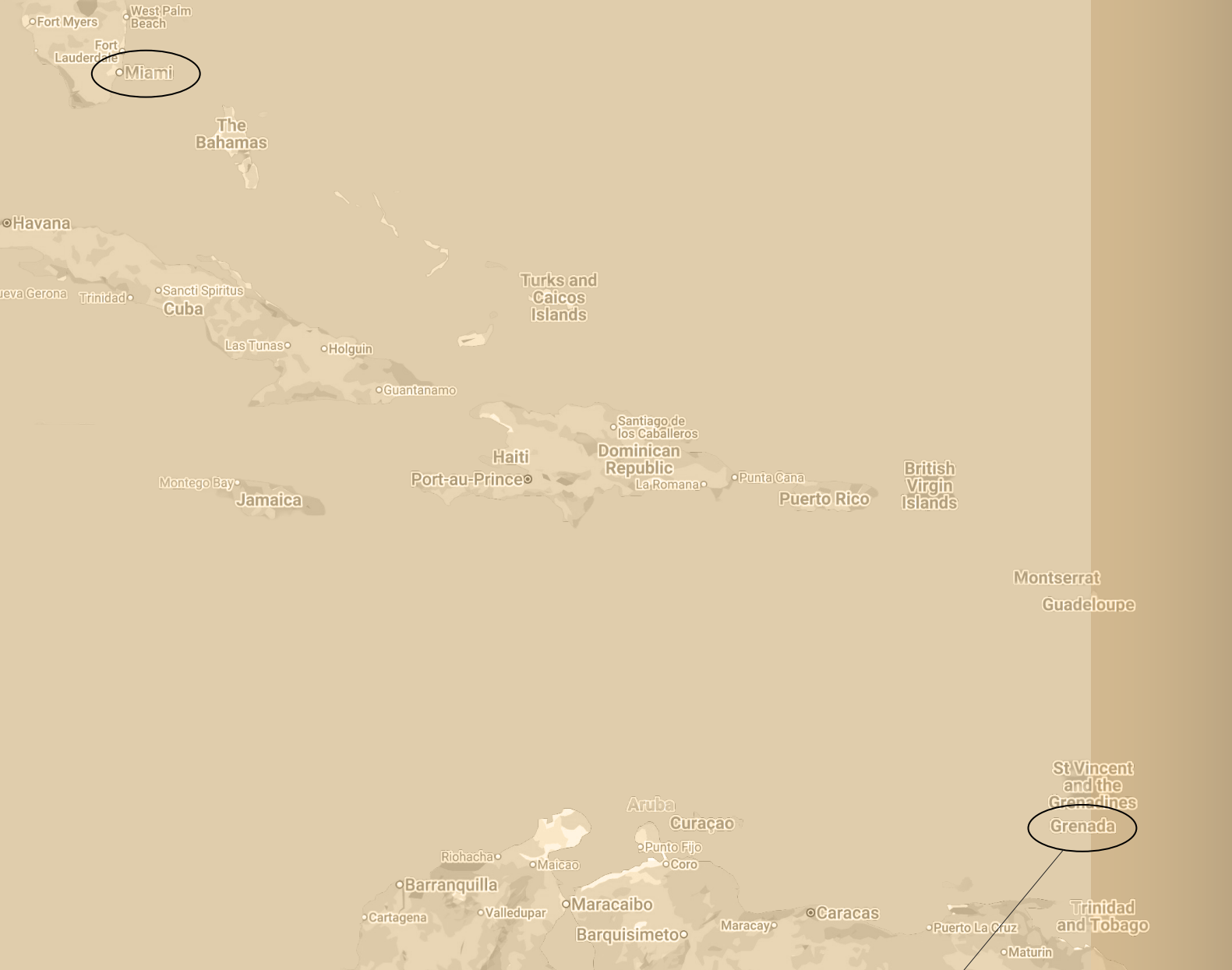
50 CONTACT & PURCHASING INFORMATION



"ORA's position is strong, it holds a legacy which has been earned through credibility, a diversified portfolio as well as offering the precious culture of happiness."

Naguib Sawiris

Naguib Sawiris



MARVELLUS

SILVERSANDS
GRAND ANSE

SILVERSANDS
BEACH HOUSE

SILVERSANDS
GRAND ANSE
VILLAS

CELEBRATED FOR ITS RELAXED CARIBBEAN LIFESTYLE AND RICH CULTURAL HERITAGE, GRENADA OFFERS A RARE BALANCE OF BEAUTY, AUTHENTICITY, AND OPPORTUNITY. FROM ITS STUNNING BEACHES TO ITS VIBRANT COMMUNITIES, THE ISLAND INVITES RESIDENTS TO EXPERIENCE A WAY OF LIFE THAT FEELS BOTH EFFORTLESS AND DEEPLY CONNECTED TO ITS SURROUNDINGS.



BEACHFRONT VILLAS

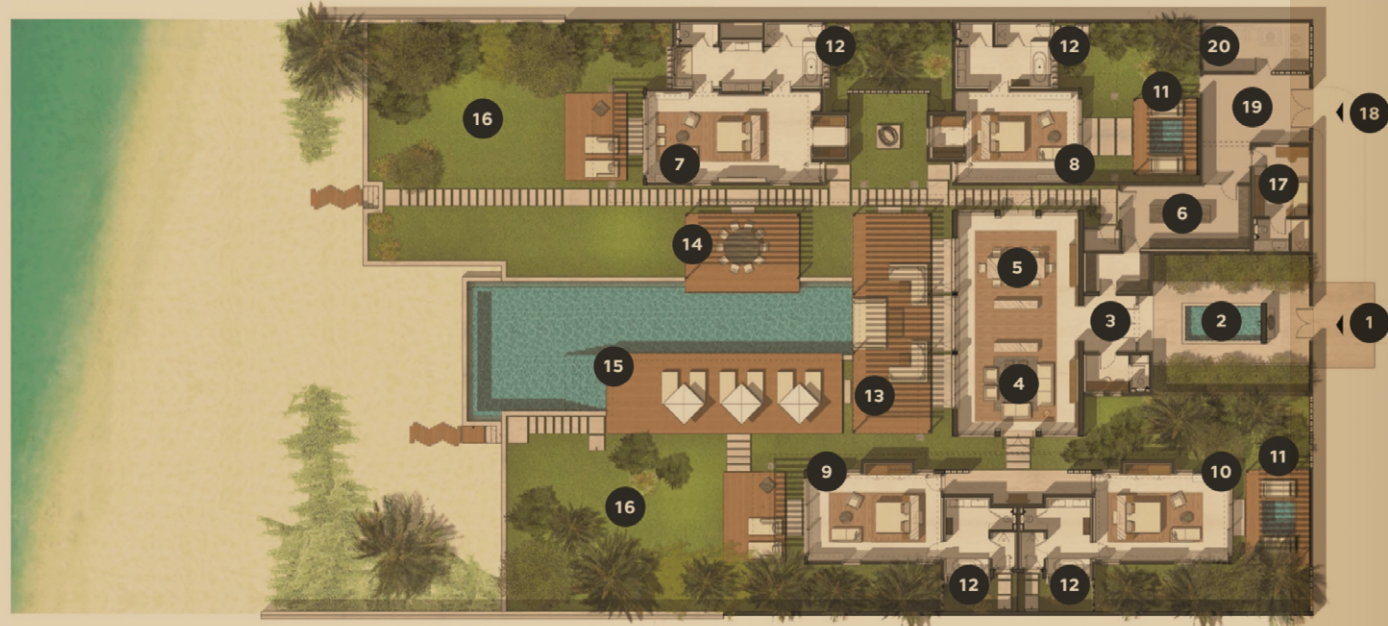
LOCATED ON GRAND ANSE BEACH, JUST STEPS FROM THE SEA, THE FIVE BEACHFRONT VILLAS EACH OFFER OVER 6,000 SQUARE FEET OF INDOOR AND OUTDOOR LIVING SPACE. WITH PLOT SIZES BETWEEN 23,000 AND 26,350 SQUARE FEET, THESE VILLAS PROVIDE COMPLETE PRIVACY AND TRUE OCEANFRONT SECLUSION.

EACH VILLA IS A STANDALONE HOME WITH FOUR BEDROOMS, FIVE BATHROOMS, THREE PRIVATE POOLS, AND STAFF QUARTERS, DESIGNED TO CONNECT SEAMLESSLY WITH GRENADA'S NATURAL SURROUNDINGS. LARGE WINDOWS, OUTDOOR DECKS, AL FRESCO DINING AREAS, AND AN OPEN-PLAN LIVING AND DINING SPACE CREATE EFFORTLESS INDOOR-OUTDOOR LIVING—ALL ON ONE LEVEL, SET DIRECTLY ON THE SAND.





BEACHFRONT VILLAS



- | | | | |
|----------------------|----------------------------------|-------------------------|----------------------------------|
| 1. MAIN ENTRANCE | 6. KITCHEN | 11. PRIVATE PLUNGE POOL | 16. GARDEN |
| 2. ARRIVAL COURTYARD | 7. BEACHFRONT MASTER BEDROOM | 12. OUTDOOR SHOWER | 17. LAUNDRY AND SERVICE QUARTERS |
| 3. ENTRANCE | 8. PLUNGE POOL MASTER BEDROOM | 13. OUTDOOR LIVING | 18. SERVICE ENTRANCE |
| 4. LIVING AREA | 9. GARDEN & BEACH MASTER BEDROOM | 14. OUTDOOR DINING | 19. SERVICE YARD |
| 5. DINING AREA | 10. PLUNGE POOL MASTER BEDROOM | 15. MAIN POOL & DECK | 20. MECHANICAL ROOM |





DESIGNED ON A SINGLE LEVEL, THE VILLAS FEATURE OPEN LIVING AND DINING AREAS FRAMED BY THE LARGEST PRIVATE POOL, ALONG WITH A FULLY EQUIPPED KITCHEN, POWDER ROOM, AND SERVICE PANTRY. ALL FOUR MASTER BEDROOMS INCLUDE ENSUITE BATHROOMS, KING-SIZE BEDS, AND PRIVATE OUTDOOR SPACES, WITH FRONT BEDROOMS OVERLOOKING THE POOL AND BEACH, AND REAR BEDROOMS FEATURING PRIVATE PATIOS AND PLUNGE POOLS SURROUNDED BY LUSH GARDENS.



SILVERSANDS
GRAND ANSE

SEAVIEW VILLAS

THE SILVERSANDS SEAVIEW VILLAS OFFER PRIVACY, PANORAMIC VIEWS, AND TIERED TERRACES, ALL WITH THE CONVENIENCE OF FIVE-STAR SERVICE. EACH VILLA IS SPREAD ACROSS THREE LEVELS, WITH A MASTER BEDROOM, SEATING AREA, AND ENSUITE BATHROOM ON EVERY FLOOR. PLOT SIZES START AT OVER 1,200 SQUARE METERS AND INCLUDE A PRIVATE POOL OF MORE THAN 50 SQUARE METERS PLUS AN ADDITIONAL PLUNGE POOL.





SEAVIEW VILLAS

GARDEN LEVEL



MAIN LEVEL



GARDEN LEVEL

- 1. BEDROOM
- 2. BATHROOM
- 3. PUMP ROOM
- 4. PLUNGE POOL

MAIN LEVEL

- 1. MAIN ENTRANCE
- 2. ARRIVAL COURTYARD
- 3. INTERIOR ENTRANCE
- 4. SERVICE YARD

5. STAFF ROOM

- 6. PANTRY
- 7. KITCHEN
- 8. MECHANICAL ROOM
- 9. BEDROOM

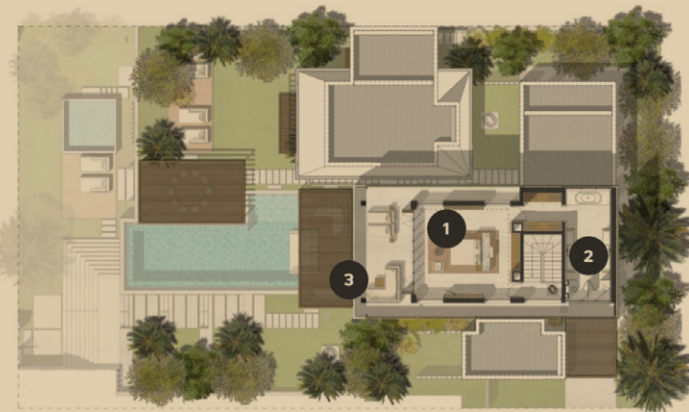
10. BATHROOM

- 11. OUTDOOR SHOWER
- 12. LIVING AREA
- 13. OUTDOOR LIVING
- 14. MAIN POOL

15. DINING SALA

- 16. GARDEN

TOP LEVEL



TOP LEVEL

- 1. MASTER
- 2. BATHROOM
- 3. PRIVATE TERRACE







DESIGNED FOR UNDERSTATED LUXURY, THESE VILLAS COMBINE THOUGHTFUL LAYOUTS, STUNNING SURROUNDINGS, AND FULL ACCESS TO FIVE-STAR RESORT SERVICES, CREATING A PRIVATE RETREAT IN ONE OF GRENADA'S MOST DRAMATIC SETTINGS.





MATERIALS & FINISHES

THE VILLAS ARE DESIGNED FOR MODERN CARIBBEAN LIVING. LIGHT OAK WOOD RUNS THROUGHOUT THE INTERIORS, WHILE KITCHENS FEATURE CALACATTA WHITE MARBLE FOR BOTH STYLE AND DURABILITY. OUTDOOR AREAS INCLUDE COMFORTABLE RATTAN AND COTTON FURNITURE AND INNOVATIVE SUN LOUNGERS, CREATING A RELAXING SPACE THAT BLENDS INDOOR AND OUTDOOR LIVING.





OWNERSHIP BENEFITS

SILVERSANDS GRENADA COMBINES THE PRIVACY OF LUXURY RESIDENCES WITH THE SERVICES OF A FIVE-STAR RESORT THROUGH ITS LUXURY CONDOMINIUMS. OWNERS CAN ENJOY IMMEDIATE ACCESS TO RESORT AMENITIES, INCLUDING THE SPA, BEACH CLUB, THAI-INSPIRED RESTAURANT, BEACHFRONT GRILL, AND EXCLUSIVE EVENTS, AS WELL AS PARTICIPATE IN GRENADA'S CITIZENSHIP BY INVESTMENT PROGRAM. THEY CAN ALSO TAKE PART IN AUTHENTIC ISLAND EXPERIENCES, FROM WATERFALL HIKES AND OPEN-OCEAN FISHING TO DIVING, CHOCOLATE AND AGRICULTURAL TOURS, AND RUM TASTINGS, CREATING A DEEPER CONNECTION WITH THE ISLAND AND THE COMMUNITY.



BESPOKE BENEFITS

- ACCESS TO ALL HOTEL FACILITIES, RESTAURANTS, SPAS, SPORTS FACILITIES, AND FITNESS CENTER
- SECURITY STAFF ON CALL 24/7
- ACCESS TO THE HOTEL CONCIERGE
- EXTERIOR AND INTERIOR LANDSCAPING
- EXTERIOR AND INTERIOR MAINTENANCE
- HOTEL BUSINESS SUPPORT (INCLUDING COURIERS, POSTAL, AND PACKAGE SERVICES)
- CABLE TELEVISION AND ENTERTAINMENT
- INTERNET ACCESS AND COMPLIMENTARY INTERNATIONAL CALLS TO 120 COUNTRIES FROM THE VILLA'S LANDLINE



CITIZENSHIP BY INVESTMENT



THE PRIDE OF OWNERSHIP

INCLUDED WITH THE PURCHASE OF A SEAVIEW OR BEACHFRONT VILLA AT SILVERSANDS GRENADA IS THE OPPORTUNITY TO PURSUE DUAL GRENADIAN CITIZENSHIP THROUGH THE ISLAND'S CITIZENSHIP BY INVESTMENT PROGRAM. ONCE VETTED AND APPROVED THROUGH AN APPLICATION PROCESS AND DUE DILIGENCE CHECKS, CITIZENSHIP IS FAST-TRACKED IN JUST FOUR MONTHS AND INCLUDES:

- GLOBAL MOBILITY VIA VISA-FREE ACCESS TO 125 COUNTRIES (INCLUDING THE UK, EUROPEAN SCHENGEN COUNTRIES, SINGAPORE, CHINA, AND IRELAND, AMONG OTHERS)
- 90-DAY SOJOURNS EVERY 180 DAYS IN EUROPE AND THE UK
- NO RESTRICTION ON NATIONALITIES TO APPLY FOR CITIZENSHIP
- NO RESTRICTION ON PHYSICAL RESIDENCY TIME PERIODS
- ZERO TAX IS LEVIED ON GIFTS, INHERITANCE OF FOREIGN INCOME, OR CAPITAL GAINS
- NO RESTRICTION ON THE REPATRIATION OF NET PROFITS GENERATED IN

GRENADA AND IMPORTED CAPITAL

GOVERNMENT INCENTIVE PACKAGES, INCLUDING CORPORATE TAX INCENTIVES, EXEMPTION FROM IMPORT DUTIES, TAX RELIEF BENEFITS, AND EXPORT ALLOWANCE FROM BUSINESSES PROPOSED IN THE PRIORITY SECTORS OF TOURISM, AGRICULTURE, HEALTH AND WELLNESS, YACHTING, AND MANUFACTURING.



LIFESTYLE & COMMUNITY

GRENADA IS AN ISLAND THAT OFFERS BOTH RELAXATION AND ADVENTURE, HISTORY AND CULTURE ALONGSIDE SUN AND SAND. AS YOU EXPLORE, YOU'LL DISCOVER LANDMARKS, LOCAL TRADITIONS, AND NATURAL BEAUTY THAT MAKE THE ISLAND UNIQUE.



STEP BACK IN TIME AT FORT FREDERICK, OVERLOOKING ST. GEORGE'S HARBOR, AND VISIT THE RIVER ANTOINE RUM DISTILLERY, THE CARIBBEAN'S OLDEST WATER-POWERED DISTILLERY, TO SEE TRADITIONAL METHODS AND SAMPLE THE ISLAND'S FAMOUS RUM. EXPERIENCE LOCAL LIFE AT THE GRAND ANSE CRAFT AND SPICE MARKET AND EXPLORE THE UNDERWATER SCULPTURE PARK, WHERE ART AND MARINE LIFE COME TOGETHER BENEATH THE WAVES.





YOU CAN ALSO SAIL TO NEARBY ISLANDS LIKE CARRIACOU AND PETIT MARTINIQUE, WHERE EACH DESTINATION OFFERS ITS OWN CHARM. EXPLORE QUIET FISHING VILLAGES, RELAX ON PRISTINE BEACHES, HIKE SCENIC TRAILS, OR SNORKEL IN CRYSTAL-CLEAR WATERS. DISCOVER LOCAL CULTURE, FROM TRADITIONAL BOAT BUILDING TO ISLAND FESTIVALS.

GRENADA IS MORE THAN A DESTINATION—IT'S AN EXPERIENCE THAT LINGERS LONG AFTER YOU'VE LEFT ITS SHORES.







CONTACT & PURCHASING INFORMATION

TO EXPLORE OWNERSHIP OPPORTUNITIES
OR SECURE YOUR STAY, OUR TEAM IS
PLEASED TO ASSIST YOU AT:

GTSERDAKIDIS@JDCGRENADA.COM

+ 1 (4 7 3) 4 2 3 - 1 4 2 4

